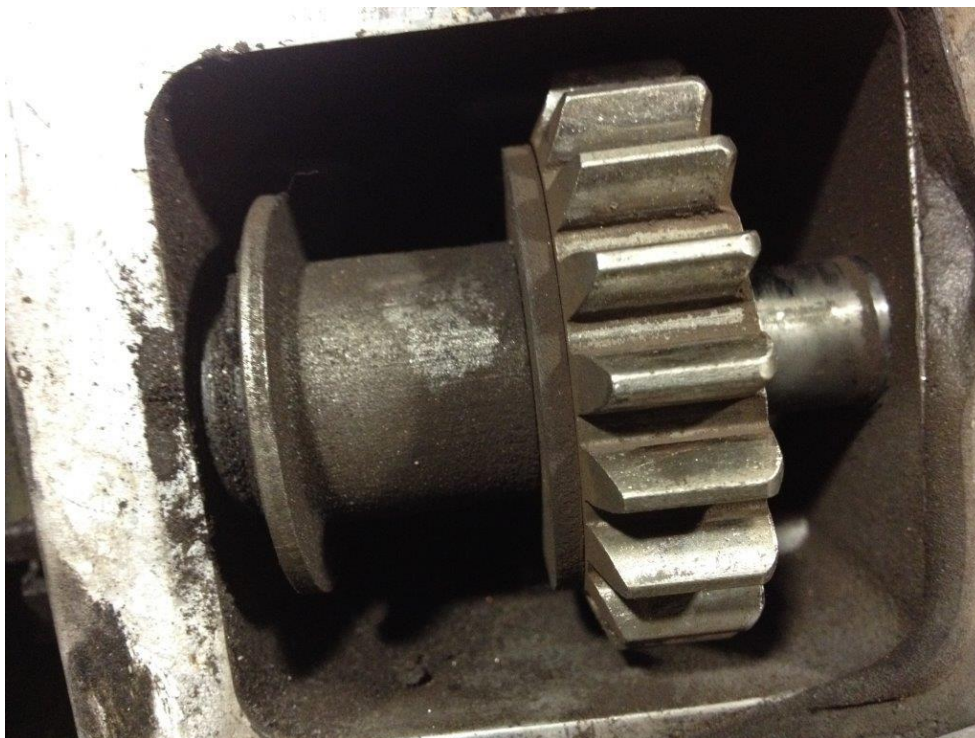


FORD TRANSIT WITH DUAL MASS FLYWHEEL

Starters fitted to Ford Transits and Mondeo with the Duratorq engine, can fail prematurely, caused by metallic debris from the Dual Mass flywheel. The Dual Mass flywheel generates metal dust from the moving parts, which are attracted to the residual magnetism in the pinion and can clog up the moving parts and prevent the starter from engaging. Any vehicle with a dual mass flywheel can generate metal dust and all starter application should be inspected for this problem. The warranty is void if the starter is found to be contaminated.